



Introduction to Data and Data Utilization Part 1



Northeastern University School Health Academy in collaboration with the Vermont Department of Health. 2022

1

Disclosures



Northeastern University School of Nursing is accredited as a provider of nursing continuing professional development by the American Nurse Credentialing Center's Commission on Accreditation.


Participants successfully completing this program will receive a statement of credit for contact hours. Statements of Credit may be printed on-line after successful completion of the learning assessment.

At this time, none of the planners or presenters for this educational activity have a relevant financial relationship(s) to disclose with ineligible companies whose primary business is producing, marketing, selling, re-selling, or distributing healthcare products used by or on patients. If relevant financial relationships are identified, this information will be shared with learners prior to the educational activity.

Vermont Department of Health

2

Presenter



Kathleen Hassey DNP, M.Ed., BSN, RN
Co-Director of the Northeastern University
School Health Academy

Vermont Department of Health

3

Learning Outcomes

After viewing the presentation, the school nurse will be able to:

- **Identify sources of school health data**
- **Recognize the vital importance and use of school health data**
- **Demonstrate each school nurse's responsibility to collect/disseminate data**

4

Evidence-Based Practice

School nurses need to demonstrate that their practice is based on the best evidence available, which is usually data obtained from research. Evidence-based practice involves combining the best evidence available with nursing expertise and patient and family preferences to determine optimum care. Evidence-based practice guidelines are developed by carefully reviewing the available evidence on a topic and synthesizing this information into recommendations for practice.

➤ [Evidence-Based Practice and School Nursing](#), Adams, Susan; McCarthy, Ann Marie, *Journal of School Nursing*, v21 n5 p258-265 2005

Vermont Department of Health

5

WHY Collect Data?

- Data-driven society
- SN: Population-based child health data
- Target audiences: Stakeholders
- The human interest: Tell a story!

Limitation: Data often raise more questions than answers

Vermont Department of Health

Anne. H. Sheetz, MA DPH 2005

6

Uses of School Health Data

- Inform stakeholders (funding)
- Monitor utilization
- Develop policies
- Relate health and educational achievement
- Implement programs/allocate resources
- Monitor performance improvement/outcomes
- Provide health indicator surveillance

Vermont Department of Health

Anne H. Sheetz MADPH 2005

7

Methods of Data Collection

- **Electronic Health Record reports**
 - Illness, injury, emotional health, 911 calls, medications administered, phone calls to parents, PCP, Return to Class rate, health, and dental insurance, etc.
- **State report submissions**
 - asthma, immunization rates, Children with Special Health Care needs, etc.)
- **Surveys (Youth Risk Behavior)**
- **National Data Sources**
 - (NASN, CDC, etc.)
- **VT School Nurse Report**

IMPORTANT LINKS:

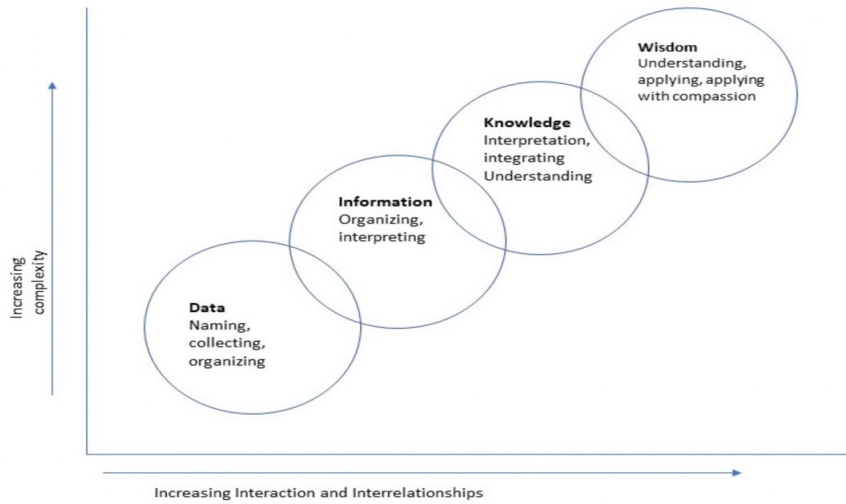
[School-age Health Performance Scorecard](#)
[Child Care and Early Learning](#)
[Find Health Insurance](#)
[Health Care and Screening Guidelines](#)
[Adolescent Health](#)
[Immunization Information for Child Care and School Providers](#)
[Youth Risk Behavior Survey](#)

Vermont Department of Health

<https://www.healthvermont.gov/family/school>

8

Data, Information, Knowledge, and Wisdom



Vermont Department of Health [Citation: Nelson, R., \(July 21, 2020\) "Informatics: Evolution of the Nelson Data, Information, Knowledge and Wisdom Model: Part 2" OJIN: The Online Journal of Issues in Nursing Vol. 25, No. 3.](#)

9

- **Presentati**
- Parent g
- School b
- Local cor
- State Co
- National
- **Op-Ed in**
- **Publish a**
- **Communi**
- **legislator**

Mental Health of School Nurses in the United States during the COVID-19 Pandemic

Highlights from a national survey | March 7-30, 2022

OVERVIEW
In March 2022, CDC collaborated with the National Association of School Nurses (NASN) and the National Association of State School Nurse Consultants (NASNC) to distribute a 121-item survey to school nurses in the U.S. Overall, 7,371 school nurses responded from all 50 states, the District of Columbia, tribal nations, and U.S. territories.

Conditions Reported by School Nurses
Symptoms of Post-traumatic Stress Disorder (PTSD)
Moderate to Severe Depression
Anxiety
Suicidal Ideation
Almost half (45%) reported symptoms of a health condition in the two weeks prior to

School of ment
- Worked
- Reported compen
- Experienced leaderd
- Felt una
- Worried

Overall, wor health sym

Improving school nurse safe environments for y
These survey findings highlight opportu to reduce workplace stressors and increa Supportive policies and practices could in support, particularly as they relate to COV

Work-Related Stressors Reported by School Nurses Class COVID-19 Was Related - Students

Health Conditions Per 100 U.S. Students 2011 Update

See reverse for more information

Legend:
Asthma, Allergy, Cancer, Learning Loss, Autism Spectrum Disorders, Tobacco use, Mental/Emotional Disorders, Food Insecurity, Substance Use, Depression/Worried, Access to Health Care

Vermont Department of Health

10

NCES Data site.
<https://nces.ed.gov/ccd/districtsearch/>

The screenshot shows the 'Search for Public School Districts' page. The search criteria are as follows:

- District Name: Burlington
- Street Address: (empty)
- City: (Browse) (empty)
- State: Vermont
- Zip Code: (empty)
- Distance: Miles from Zip (empty)
- County: (Browse) (empty)
- Phone #: (empty)

Additional Characteristics:

- regular
- component
- supervisory union
- regional
- state
- federal
- charter
- other

Number of Students: (empty) or more

Number of Schools: (empty) or more

Source: CCD public school district data for the 2020-2021, 2021-2022 school years

11

The screenshot shows the search results for the query. The results are as follows:

District Name	Phone	County*	Students	Schools
1. Burlington School District 150 Colchester Avenue, Burlington, VT 05401	(802)864-8474	Chittenden County	3,591	10
2. Burlington Supervisory District 150 Colchester Avenue, Burlington, VT 05401	(802)864-8474	Chittenden County	†	0
3. South Burlington School District 500 Dorset Street, South Burlington, VT 05403	(802)652-7100	Chittenden County	2,688	5
4. South Burlington Supervisory District 550 Dorset Street, South Burlington, VT 05403	(802)652-7052	Chittenden County	†	0

Source: CCD public school district data for the 2020-2021, 2021-2022 school years

Notes:

- * denotes a column with data from 2021-2022
- [†] indicates that the data are not applicable. For example, the enrollment and staff characteristics for districts that opened in the 2021-2022 school year will not be available until the full 2021-2022 file is released.
- [-] indicates that the data are missing.
- [‡] indicates that the data do not meet NCES data quality standards.
- The directory information on district name, address, and phone number are preliminary data from initial submissions of district level data for 2021-2022.
- Data provided on student membership and staffing are from the official district level data for 2020-2021.

Similar Search

Based on your geographic search for Public School Districts, you can also search for...

[Public Schools](#) | [Private Schools](#) | [Public Libraries](#)

Download This Data

[Download](#) | [Excel File](#) Your data file will be created based on the selection criteria you have entered.

Depending on the amount of data needed to create the file, this may take a

12

IES NCES National Center for Education Statistics

Search for Public School Districts

CCD Common Core of Data

District Directory Information (2021-2022 school year)

District Name: Burlington School District schools for this district	NCES District ID: 5002820	State District ID: VT-T037
Mailing Address: 150 Colchester Avenue Burlington, VT 05401-2721	Physical Address: 150 Colchester Avenue Burlington, VT 05401-2721	Phone: (802)864-8474
Type: Local school district component of supervisory union	Status: Open	Total Schools: 10
Supervisory Union #: 015	Grade Span: (grades PK - 12) PK K G 1 2 3 4 5 6 7 8 9 10 11 12	
Website: http://bsdweb.bsdyt.org/	District Demographics: School District Demographic Dashboard	

District Details (2020-2021 school year; Fiscal data from 2018-2019)

County: Chittenden County	County ID: 50007
Locale: City: Small (13)	Total Students: 3,591
	Classroom Teachers (FTE): 307.02
	Student/Teacher Ratio: 11.70

NOTES

- [†] indicates that the data are not applicable. For example, the enrollment and staff characteristics for districts that opened in the 2021-2022 school year will not be available until the full 2021-2022 file is released.
- [-] indicates that the data are missing.

13

IES NCES National Center for Education Statistics

EDCE EDUCATION DEMOGRAPHIC AND GEOGRAPHIC ESTIMATES

HOME DEMOGRAPHIC DATA GEOGRAPHIC DATA ECONOMIC DATA ABOUT

ACS-ED District Demographic Dashboard 2015-19

Burlington School District, VT

Change School District

Community

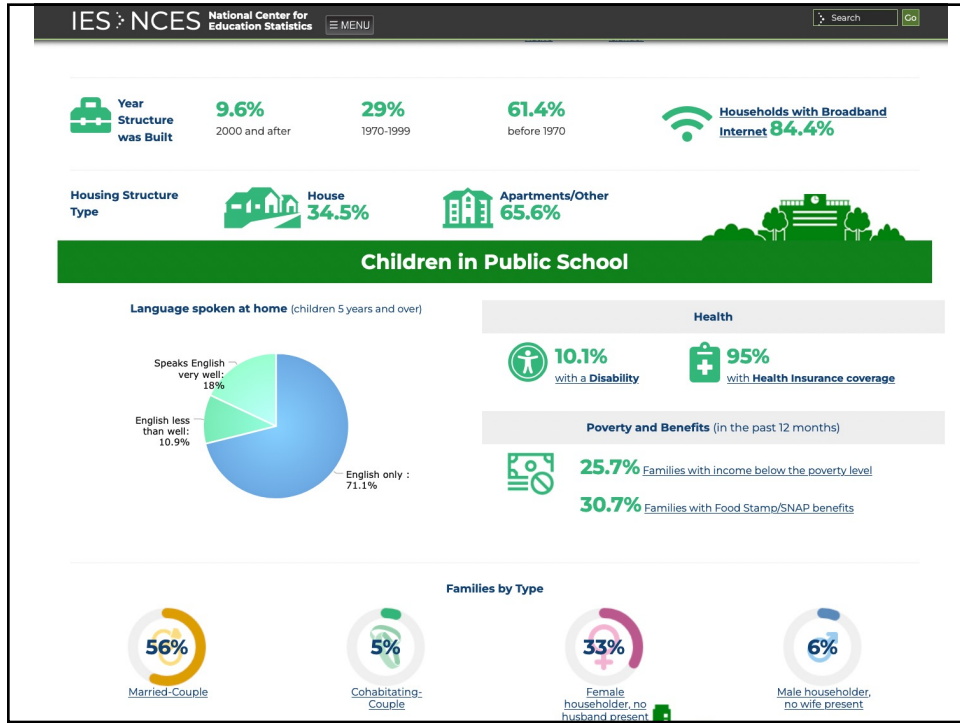
Total Population 42,545	Median Household Income \$51,394	Total Households 16,552
----------------------------	-------------------------------------	----------------------------

Race/Ethnicity

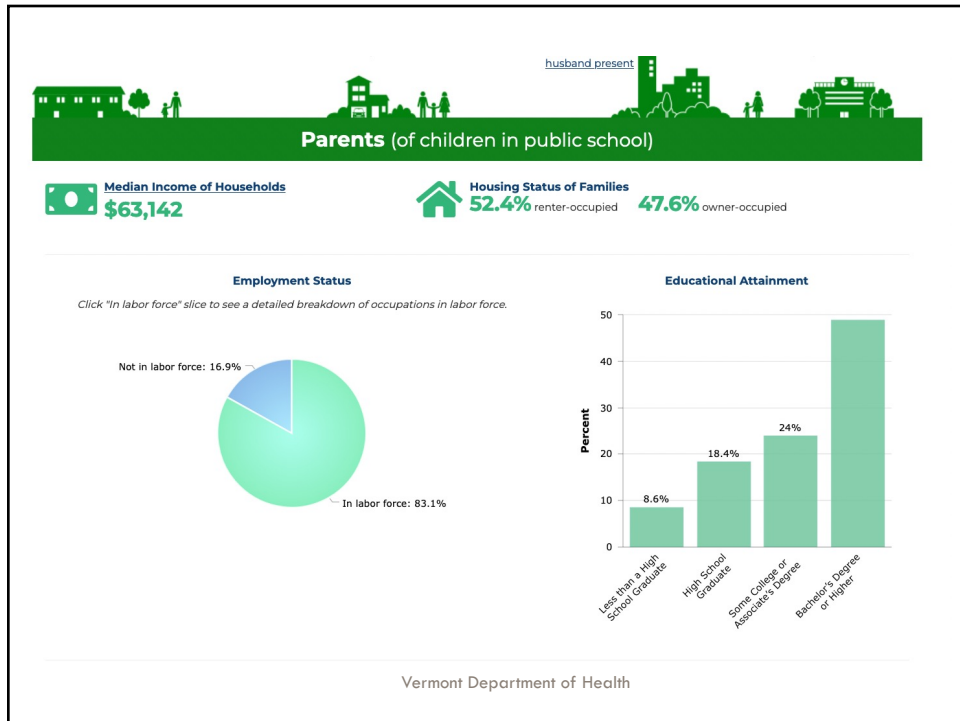
White: 83%	Black: 6%	Hispanic or Latino: 3%	Asian: 6%	American Indian/Alaskan Native: 0%	Hawaiian and Other Pacific Islander: 0%	Some other race alone: 0%	Two or more races: 2%
------------	-----------	------------------------	-----------	------------------------------------	---	---------------------------	-----------------------

Vermont Department of Health

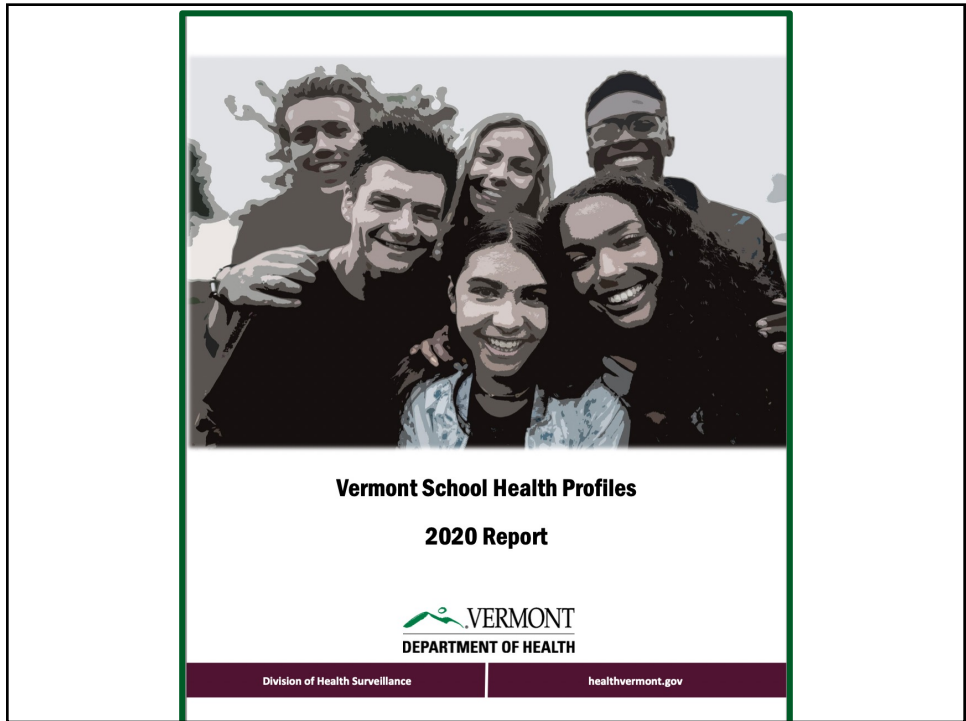
14



15



16



17

Vermont School Health Profiles

<https://www.healthvermont.gov/health-statistics-vital-records/population-health-surveys-data/school-health-profiles>

HEALTH STATISTICS & VITAL RECORDS

- HOW HEALTHY ARE WE? PUBLIC HEALTH DATA
- VITAL RECORDS & POPULATION DATA
- PUBLIC HEALTH GIS
- POPULATION HEALTH SURVEYS & DATA
- HEALTH CARE SYSTEMS REPORTING
- REGISTRIES
- SURVEILLANCE & REPORTING BY TOPIC

CONTACT:
Health Statistics and Informatics
P.O. Box 70
Burlington, VT 05402
Phone: 802-863-7300

[RETURN](#)

QUICK LINKS | ALERTS | GET HELP NOW | SEARCH

HOME / HEALTH STATISTICS & VITAL RECORDS / POPULATION HEALTH SURVEYS & DATA /

VERMONT SCHOOL HEALTH PROFILES

The School Health Profiles is a biannual set of surveys supported by the Centers for Disease Control and Prevention's Division of Adolescent and School Health's (DASH). The Vermont Agency of Education collected data from 2002 to 2012. The Health Department began collecting data in 2014. Data are collected from middle and high school principals and lead health education teachers to assess school health policies, programs, and practices.

The School Health Profiles monitors school health education requirements and content, physical education and activity, school health policies related to HIV infection/AIDS, tobacco use prevention, nutrition, asthma management activities, family and community involvement in school health programs, and school health coordination.

Reports

- 2020 School Health Profiles
 - Executive Summary
 - Full Report
- 2018 School Health Profiles
 - Executive Summary
 - Full Report
- 2016 School Health Profiles
- 2014 School Health Profiles

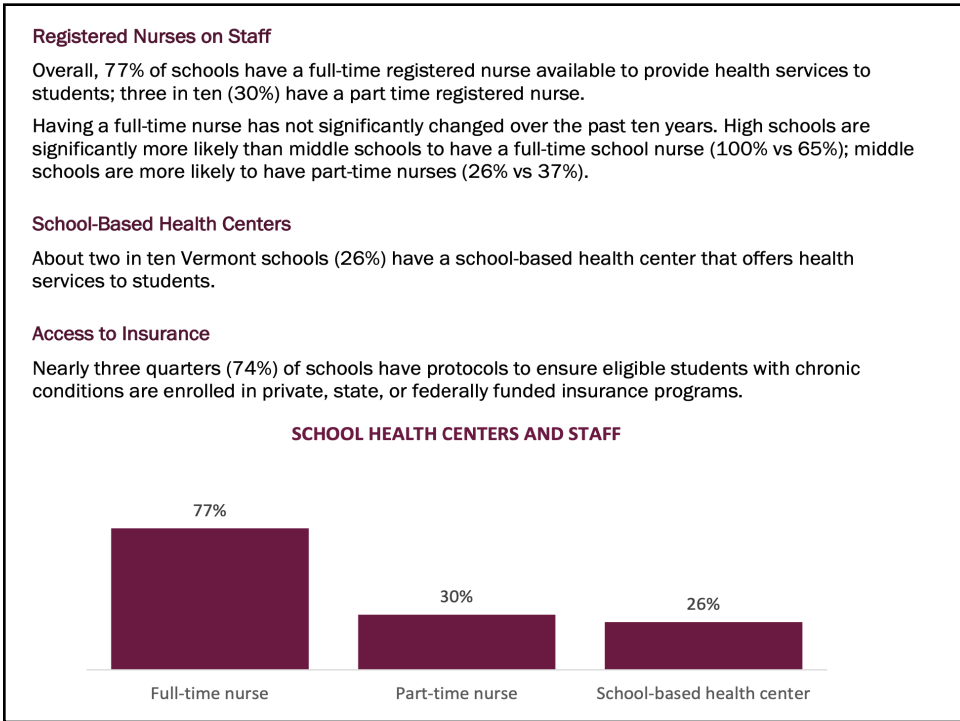
Data Briefs

Questionnaires

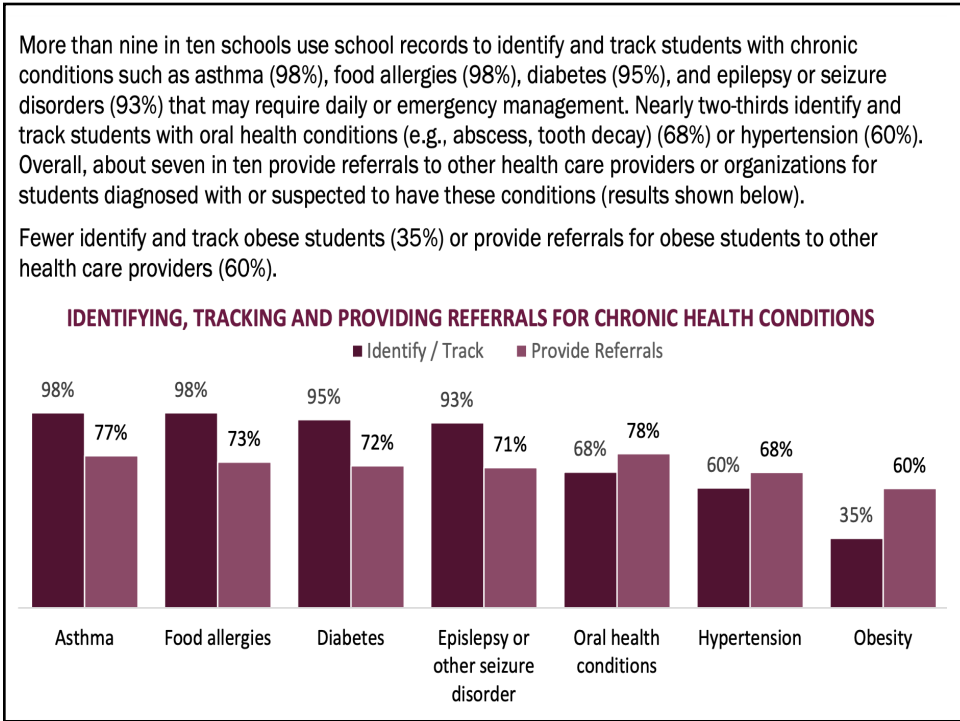
OTHER YOUTH DATA RESOURCES AND TOOLS
Vermont Department of Health
• CDC School Health Profiles

YRBS data and Immunization data
<https://www.healthvermont.gov/disease-control/immunization/vaccination-coverage>

18



19



20

Resources

- Adams S, McCarthy AM. Evidence-Based Practice and School Nursing. *The Journal of School Nursing*. 2005;21(5):258-265. doi:[10.1177/10598405050210050301](https://doi.org/10.1177/10598405050210050301)
- Yonkaitis C. F. (2018). Evidence-Based Practice and School Nurse Practice: A Review of Literature. *The Journal of school nursing : the official publication of the National Association of School Nurses*, 34(1), 60–67. <https://doi.org/10.1177/1059840517728108>

Vermont Department of Health